

North Dakota EHDI

Early Hearing Detection and Intervention

Quarterly Newsletter WINTER 2024



On behalf of the North Dakota Early Hearing Detection and Intervention Program Staff, we want to take a moment to let you know how thankful we are to have you as part of our North Dakota Hearing Health community. We are grateful for your support as we maximize our potential through our vital and unique services. We wish you and your family the best this Holiday Season and throughout 2025!

Happy Holidays

from Jerusha, Sue, Tory, Shelby and Christine

National EHDI Conference 2025

It is almost time to start preparing for the 24th annual Early Hearing Detection & Intervention (EHDI) conference held March 9-11, 2025, in Pittsburgh, PA. The conference is organized by the American Academy of Pediatrics, National Center for Hearing Assessment & Management at Utah State University, Hands & Voices, and U.S. Department of Health and Human Services: Health Resources and Services Administration. This is an excellent opportunity for anyone with a stake in hearing health. The annual EHDI conference provides an opportunity to go beyond our focus and understand the breadth of what hearing health is as a system of care. You will have the chance to hear how other states' EHDI systems are progressing, what is happening federally, and how the work you do affects families and individuals. The annual EHDI conferences are not only educational but also inspirational experiences! We hope you make every effort to attend the conference! If you have questions, visit the conference website at <https://ehdiconference.org/>, or you may contact Jerusha Olthoff, MSM, ND EHDI Program Director, at 1-800-233-1737. We hope to see you there!



Don't let the fear of losing be greater than the excitement of winning.

-Robert Kiyosaki



Language Acquisition Project Update

The North Dakota Early Hearing Detection and Intervention (ND EHDI) program is pleased to announce a second year of supplemental funding from the Health Resources and Services Administration (HRSA) to support our ongoing efforts to assess and build capacity for language acquisition and other developmental milestones for children identified as deaf or hard of hearing (DHH) by age 3. With the help of our partners, we are developing and implementing this project across North Dakota.

Starting **January 14, 2025**, ND EHDI will host a new ECHO series, "Pathways to Language: From Newborn Hearing Screening to Kindergarten Readiness." These online sessions will run weekly on **Tuesdays from Noon to 1 PM** through **February 25, 2025**. The series is designed to deepen stakeholder knowledge of the Early Hearing Detection and Intervention (EHDI) system and promote evidence-based practices to improve language acquisition outcomes for DHH children. To register, visit [\[link\]](#).

This virtual ECHO series will feature expert presentations and peer-to-peer learning, with a primary focus on language acquisition for DHH children up to age 3. Participants will learn best practices for family engagement, advocacy for timely newborn hearing screenings, and data-driven approaches to assessing and improving language development outcomes.

Our sessions aim to equip early interventionists and pediatric healthcare providers with a comprehensive understanding of the recommended EHDI benchmarks: completing hearing screening by 1 month, diagnostic evaluation by 3 months, and enrolling in early intervention services by 6 months. Known as the "1-3-6 benchmarks," these milestones are crucial to language acquisition, interagency communication, and compassionate family support strategies. By fostering knowledge of these core elements, we hope to empower professionals to address barriers faced by DHH children and their families, ultimately creating a supportive network for positive language development from birth through kindergarten readiness.

We are excited to work with our partners and look forward to updating you on our progress throughout this important project!

Jerusha Olthoff, MSM - ND EHDI Program Director

Christine Brigden, LBSW - ND EHDI Follow-up Coordinator

Shelby Clark, MS, CCC-SLP - Early Intervention Speech Language Pathologist and ND EHDI Staff

North Dakota EHDI works with parents and providers to ensure all babies get their hearing screened:



Hearing Screening before 1 month of age

Every newborn should receive complete hearing screening care by 1 month of age.

Diagnostic Testing before 3 months of age

If your child does not pass their newborn hearing screening, they should receive a diagnosis from an audiologist by 3 months of age.

Early Intervention before 6 months of age

If your infant is diagnosed with permanent hearing loss, they should be provided the opportunity to enroll in early intervention services by 6 months of age.

Parent Support right from the start

Babies diagnosed with DHH will be referred to parent support to link them to services that can help them in this process.



Pathways to Language



From Newborn Hearing Screening to Kindergarten Readiness

A FREE ECHO SERIES FOR PROFESSIONALS

The Pathways to Language: From Newborn Hearing Screening to Kindergarten Readiness ECHO aims to enhance stakeholder knowledge of the Early Hearing Detection and Intervention (EHDI) system and build data capacity to improve language acquisition outcomes for deaf and hard-of-hearing children.

The series will address barriers such as limited provider knowledge, communication gaps, and increasing newborn hearing screenings. Professionals will gain strategies to support families, advocate for screenings, and use data to enhance language outcomes from birth to kindergarten readiness.

Session Dates and Times:

Every Tuesday
Jan. 14, 2025 - Feb. 25, 2025
12:00 pm - 1:00 pm CT




INTERESTED IN JOINING US?

Online via Zoom

- No cost to participants
- Learn best practices from Subject Matter Experts
- Peer-to-peer community of practice

REGISTER



 ndcpd.org/echo

 Krista.Opstedal@minotstateu.edu



Never doubt that a small group of thoughtful, committed citizens can change the world; indeed, it's the only thing that ever has.

- Margaret Mead

20th Annual H&V Leadership Conference

The 20th Annual Hands and Voices Leadership Conference was held in Spokane Washington hosted by the Washington and the British Columbia chapters. With the theme as "Weaving the Threads of Leadership." This was a great networking with H&V Chapter Leaders, H&V Guide by your Side and ASTra Programs, Family based organizations, Parents of Children who are Deaf or Hard of Hearing, and all types of interested professionals.

I had the opportunity to travel with the North Dakota Hands and Voices President Deanna Anderson from Devils Lake, ND. We were able to attend many different sessions and network with many different people. Deanna was also accepted and attended the kickoff meeting for the yearlong Leadership to Leadership (L2L). Deanna will be able to represent North Dakota in this program!

I was able to attend many different sessions to expand my knowledge and leadership and also enhance my family support ideas and knowledge. I was able to hear from other parents' experiences and journeys but also hear from successful Deaf/ Hard of Hearing adults.

As Tory mentioned in the above paragraphs, She and I had a fabulous time in Spokane. This conference is a chance every

year to come together with chapters all over the United States, Canada, and other countries, re-ignite our passions, and just share our lives with like-minded individuals. Hand & Voices started the L2L program a few years ago to assist board members learn and become comfortable in a leadership role within their chapter. I was so excited to have my application accepted along with 14 other people, having the opportunity to learn from our mentors and each other.

Thank you to the ND EDHI Team for allowing me to attend this year and I hope to go to the National EHDl conference in March with them!

Submitted by Tory Allen and Deanna Anderson





North Dakota School for the Deaf/ Resource Center Parent-Infant Program and School Age Outreach Specialists

For more information, contact Nicole Swartwout at (701) 857-8681 or nicole.swartwout@k12.nd.us



Families across North Dakota enjoyed regional pumpkin patches.

Sponsored by the North Dakota School for the Deaf Parent-Infant Program and School Age Outreach and North Dakota Hands & Voices, families met in Bismarck, Williston, Minot, East Grand Forks, Fargo and Dickinson for pumpkins and fun.



Special Health Services

Screening, Evaluation & Treatment for Hearing Loss

Financial Coverage Program - Helps families pay for medical services for eligible children, youth and young adults, from birth to 21 years of age who require specialty care to diagnose and treat their chronic health conditions.

Services include:

- Diagnostic Services - Provides coverage for services that promote early diagnosis of eligible medical conditions.
 - This service can be used immediately after the first hearing screen is not passed (referred) until a diagnosis is confirmed or ruled out; however,
 - There is a financial eligibility requirement (with cost-share option if needed).
- Treatment Services - Provides coverage for services to children with chronic health conditions who meet medical and financial eligibility criteria.
 - This service can be used when your child is diagnosed with permanent hearing loss; however,
 - There is a financial eligibility requirement (with cost-share option if needed).

For questions or to see if your family may qualify for these services, contact:

Special Health Services

Claims and Eligibility Administrator

Phone: 701.328.4816

Toll-free: 1.800.755.2714

Website: <https://www.health.nd.gov/youth/special-health-services/SHS-Financial-Coverage-Program>

Early Hearing Detection and Intervention Resources, Upcoming Events, and Webinars

ND EHDI Advisory Meetings

- April 8, 2025 10 am - Noon
- October 7, 2025 10 am - Noon

If you have any questions, please contact:

Jerusha Olthoff, MSM

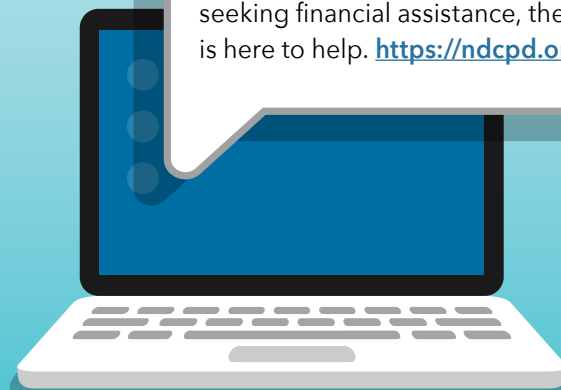
ND EHDI Program Director

The North Dakota Center for Persons
with Disabilities

1-701-858-4360, toll free, 1-800-233-1737,

jerusha.olthoff@minotstateu.edu

The **ND EHDI website** is a valuable resource that offers help, guidance, and support for families, financial assistance, and professionals. Whether you are a parent seeking support for your child with hearing loss, a professional seeking training and guidelines, or someone seeking financial assistance, the ND EHDI website is here to help. <https://ndcpd.org/ndehdi/>



Online Newborn Hearing Screening Training

The Newborn Hearing Screening Training (NHSTC) is a competency-based course designed to provide the learner with a thorough understanding of the components necessary for conducting quality newborn hearing screening. The recommended practices throughout the course are based on the Joint Committee on Infant Hearing (JCIH) 2019 Position Statement. By taking the course, screeners and stakeholders will have the necessary foundation to do a thorough job and feel confident in their role.

The NHSTC is self-paced in that participants can learn at their own pace. Those who complete all required elements of the course are eligible for a Certificate of Completion provided by the National Center for Hearing Assessment and Management (NCHAM) and if eligible, continuing education credits provided by The American Academy of Audiology (AAA) and the National Association of Pediatric Nurse Practitioners (NAPNAP).

Currently, there is no charge for the course but beginning April 1, 2025, there will be a cost of \$50 per person for the curriculum and \$25 per person for the recertification test for expenses associated with ongoing improvements and maintenance.

Accompanying this course is the new NHSTC "Competency Checklist" which is a tool to observe, assess, document and track screening staffs' procedural competencies as outlined in the Newborn Hearing Screening Training Curriculum (NHSTC). For optimal training outcomes, we recommend all screeners complete the NHSTC as well as demonstrate "hands-on" competencies screening babies with the specific screening equipment used in their facility. It is recommended that the trainee shadow a competent screener until all competencies on the checklist are accomplished and readiness to screen independently is verified. It can also be used to identify areas where further training and support is needed. [Click here to obtain the checklist \[PDF\].](#)

Screening equipment used throughout the NHSTC is for the purpose of assisting the learner through demonstration. NCHAM and the NHSTC do not endorse the use of any specific type of equipment.

NHSTC Non-Certificate Version

If you are not interested in earning a Certificate of Completion and/or CEUs/ CE Contact Hours, you can [watch the course online](https://www.infanthearing.org/nhstc/HTML-2021-NewbornHearingScreeningTraining/story.html) (https://www.infanthearing.org/nhstc/HTML-2021-NewbornHearingScreeningTraining/story.html) for no cost **until March 31, 2025.**



Deaf awareness was celebrated across the state of North Dakota with the annual pumpkin patch events co-sponsored by North Dakota School for the Deaf Parent-Infant/School-Age Outreach Department and North Dakota Hands & Voices. Families all across the state look forward to this yearly event and the opportunity to connect with both old and new acquaintances. I can't wait to see what next year's pumpkin patch events have to bring!



FAMILY VOICES OF NORTH DAKOTA[®]

Navigating Crossroads to Hope

We hope this finds you all doing well and adjusting to the seasons changing. Family Voices of North Dakota has started their Extended Learning Calls. If you have not seen the Extended Learning Calls on the EHDI Project. You can go to Youtube and search for the Family Voices of North Dakota channel and find them there.

As a reminder about our Extended Learning Calls we host these calls week nights during the evening. They are held in the evening to assure families are able to attend. These calls are for both families and providers to learn about new programs and expand their skills. If any provider, would like to be a guest speaker, to get information out to a larger group, let us know. The Extended Learning Calls will be recorded and posted on our website at www.fvnd.org

We announce these workshops via our Family Voices of North Dakota list serv, and our e-newsletter which is distributed weekly on Mondays. If you are a family member or provider and would like to receive our e-newsletter and list serv, you can be added to this list to receive this information by emailing donene@fvnd.org; or you can call the Family Voices of ND office at 888-522-9654.

Our Parent Leadership Institute was held in October and what a wonderful group joined us. Additionally, we will be planning online virtual Care Coordination

Training and our Care Giver Café training which helps families plan for transition. These will be announced through our list serv and also on our Family Voices of ND face book page. Head on over and give us a like: <https://www.facebook.com/FVND1>

Staff in Grand Forks held a Trunk or Treat at the Alerus Center and had a wonderful turnout and was happy to see some familiar faces. Santa Meet and Greet has been scheduled in Fargo and will be working to see if we can do others across the state.

If you are a family member and need additional support, do call us at Family Voices of North Dakota. We are here to help. Family Support is a vital component as families adjust to a new diagnosis and changing times. Supporting families and connecting them to family organizations assures that families get resources and services in ways that are respectful, relevant and honor their unique choices and perspectives so that they can make informed decisions to achieve the best possible outcomes for their children and youth. It takes us all. Again, always feel free to contact us at the toll free number above should you have any questions.

*If you want to succeed you should strike out on new paths,
rather than travel the worn paths of accepted success."*

-John D. Rockefeller



Early Hearing Detection and Intervention Resources, Upcoming Events, and Webinars

Sign up now for the

2025 Pathways to Language ECHO

covering topics from Newborn Hearing Screening to Kindergarten Readiness

Target Audience:

Nurses, Audiologists, Early Interventionists, Social Workers, Parents, Primary Care Providers, Speech-Language Pathologists

Every Tuesday:

January 14, 2025 - February 25, 2025

12:00 pm - 1:00 pm CST

Register at <https://ndcpd.org/echo/>

FREE PROFESSIONAL DEVELOPMENT

The Pathways to Language: From Newborn Hearing Screening to Kindergarten Readiness ECHO aims to enhance stakeholder knowledge of the Early Hearing Detection and Intervention (EHDI) system and build data capacity to improve language acquisition outcomes for deaf and hard-of-hearing children.

Sessions are online via Zoom

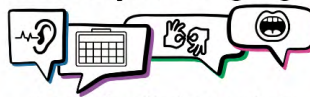
- No cost to participants
- Learn best practices from Subject Matter Experts
- Peer-to-peer community of practice

REGISTER NOW

Visit Our Website
ndcpd.org/echo



Pathways to Language



From Newborn Hearing Screening to Kindergarten Readiness



Register Today for the

NDCPD Collaboration for Change Webinar

Join us on Thursdays from Noon to 1:00 PM CST, starting January 23 through February 20, 2025. These webinars are open to anyone interested in disability-related topics and we offer contact hours for social work and nursing practitioners.

Don't miss this opportunity! Register today

at <https://ndcpd.org/webinar-series/>.



Nursing and Social Work
Contact Hours Available
Must be present for Contact Hours

Collaboration For Change Webinar Series

Join us for a series of webinars about various disability topics and find out how NDCPD can help you in the specific disability areas!

TIME

Each session will begin at Noon and conclude by 1:00 pm CST

DATE	WEBINAR TITLE	GUEST PRESENTER
Jan 23, 2025	Client Rights and Dignity of Risk	Pamela Mack, North Dakota Protection & Advocacy
Jan 30, 2025	Aging in Place	Tamar Heller, Director, Institute on Disability and Human Development
Feb 6, 2025	Inclusive Instructional Strategies using AI	Lori Cooney, Institute for Community Inclusion at UMass Boston
Feb 13, 2025	Ethical Foundations of Professionalism and Wellbeing	Kristen Fischer, Kristen M Fischer Consulting
Feb 20, 2025	Neurodevelopmental Disabilities: The Importance of Early Intervention and the Basics of Behavior Interventions	Olivia Holter, University of Utah

FOR MORE INFO

800-233-1737

www.NDCPD.org/2024webinar

REGISTRATION

Call 800-233-1737

[Register Here](#)



Since 2002, the **National Early Hearing Detection and Intervention (EHDI) Conference** has provided key stakeholders an opportunity to identify areas of concern, promote collaboration, and share best practices. Join with other professionals and parents intent on improving early hearing screening, diagnosis, and intervention systems for infants/young children and their families. The 2025 EHDI Conference content will be relevant to:



State EHDI program staff members

- Audiologists
- Physicians and other Health Care Providers
- Families of children with hearing loss
- Early Intervention Specialists
- Speech-Language Pathologists
- Advocates
- Representatives from the major organizations working with EHDI programs
- Students

Join us on **March 9-11, 2025** in Pittsburgh, PA for the best EHDI Conference yet! For more information, visit EHDI Annual Conference (ehdiconference.org)

AAA 2025 + HearTECH EXPO

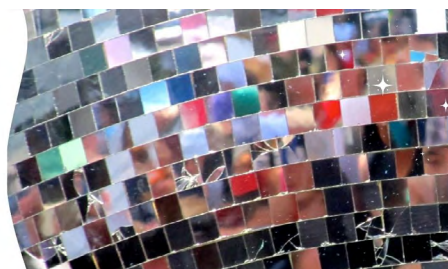
MARCH 26-29 | NEW ORLEANS, LA

AAA 2025+HearTECH Expo, March 26-29, 2025, in New Orleans, Louisiana, offers top-notch education igniting your passion for your profession, exciting and fun networking opportunities where you'll meet new people, hands-on activities, and much more. To Learn more and to register visit <https://www.audiology.org/event/aaa-2025-heartech-expo/>



American Cochlear Implant Alliance
- CI2025: Boston, MA
April 30 - May 3, 2025.

For more information visit <https://www.acialliance.org/page/CI2025>



Run. Walk. Bike. Hike. Roll. Crawl. Whatever your mode, join us to STAY ALIVE in 2025! All virtual 5K registrants will receive a race t-shirt, and the first 500 registrants will receive a custom finisher's medal. Note: Your shirt will ship in December prior to the event. Go to the event website: <https://runsignup.com/handsvoicesnewyear5k>. And find the North Dakota team!



Save the date for the 2025 Hands & Voices National Leadership Conference will be held in beautiful Panama City Beach, Florida, from October 5-7, 2025! It will be a fantastic opportunity to connect, learn, and collaborate. Learn more at <https://www.facebook.com/FloridaHandsandVoices>



The Family Leadership in Language and Learning Center (FL3), housed at Hands & Voices (<https://handsandvoices.org/fl3>), is funded to enhance family-to-family support, develop family leadership skills, and engage DHH adults in EHDI programs.



The Midwest Conference on Deaf Education will be held June 17 & 18, 2025, in Sioux Falls, SD, at the Sioux Falls Convention Center.

Learn more at <https://mwdeafconference.org/>



Please plan to join us for the **2025 Conference in Minneapolis**, Minnesota September 7-9, 2025!

The goal of the congenital CMV Public Health and Policy Conference (CMV-PHP) is to present the latest research on diagnosis and treatment, raise awareness, delineate prevention efforts, provide information about early intervention options, and disseminate family support resources in an effort to reduce the number of babies born with CMV and connect

families affected by CMV with the resources they need to improve their quality of life. <https://buff.ly/4dMmKMN>

With your help, we can reduce the number of babies born with CMV!

EHDI National Network Resources

The EHDI National Network Resources provides technical assistance and consists of three entities that work together to advance EHDI systems of services. Their goal is to ensure that deaf and hard-of-hearing newborns, infants, and young children up to age 3 receive appropriate support and timely services to improve language acquisition outcomes.



The Implementation and Change Center (ICC)

housed at Gallaudet University's Beacon Center (<https://gallaudet.edu/national-beacon-center>)

is funded to support state EHDI programs using implementation science and change management methods.



The Provider Education Center (PEC)

housed at American Academy of Pediatrics (<https://www.aap.org/en/patient-care/early-hearing-detection-and-intervention>), is funded to provide resources and training for health care and allied health professionals so they can interact more effectively with the EHDI programs.

Free Material About Hearing Loss in Children

CDC has FREE brochures, posters, fact sheets, and more for parents, health care providers, and public health professionals. You can view, download, and print the materials at <https://www.cdc.gov/ncbddd/hearingloss/freematerials.html>.



HOSPITALS: Do you need more brochures?

Please email vickie.brabandt@MinotStateU.edu

ARE YOU FOLLOWING US?

 www.facebook.com/NDEHDI

 [@NDEHDI_NDCPD](https://twitter.com/NDEHDI_NDCPD)



CHIME IN!

Check out the ND EHQI website at www.ndcpd.org/ndehti for information or meet the staff. Also, if you have questions, find broken links or typos, or have suggestions, please let us know.

We hope you will find the newsletter provides a broad picture of hearing healthcare in North Dakota. Through collaborative efforts, streamlined processes and consistent communication, ND can assure a strong system of hearing health care for every child birthed and/or residing in North Dakota.

We look forward to being a resource for quality improvement and working with you!

CONTACT INFORMATION

ND EHQI Program Coordinator

Joyal Meyer, MSN, RN

Director, ND Newborn Screening

North Dakota Health and Human Services

Special Health Services Unit

600 E. Boulevard Ave., Dept. 325

Bismarck ND 58505-0250

Phone: 701-328-4534 Fax: 701-328-1645

Email: jbmeyer@nd.gov

ND EHQI Program Director

Jerusha Olthoff, MSM

North Dakota Center for Persons with Disabilities

Minot State University, Memorial Hall

500 University Ave. West. Minot, ND 58707

Phone: 701-858-4360 Fax: 701-858-3483

Website: <https://ndcpd.org/ndehti/>

Email: jerusha.olthoff@minotstateu.edu

ND EHQI Follow-up/Data Coordinator

Sue Routledge

North Dakota Center for Persons with Disabilities

Phone: 701-858-3006

Email: sue.routledge@minotstateu.edu

Family Support Specialist

Tory Allen

ND EHQI Follow-up Family Support Specialist

North Dakota Center for Persons with Disabilities

Phone: 1-800-233-1737

Email: tory.allen@ndus.edu

ND EHQI Follow Up Coordinator

Christine Brigden, LBSW

North Dakota Center for Persons with Disabilities

Phone: 701-858-3356

Email: christine.brigden@minotstateu.edu

