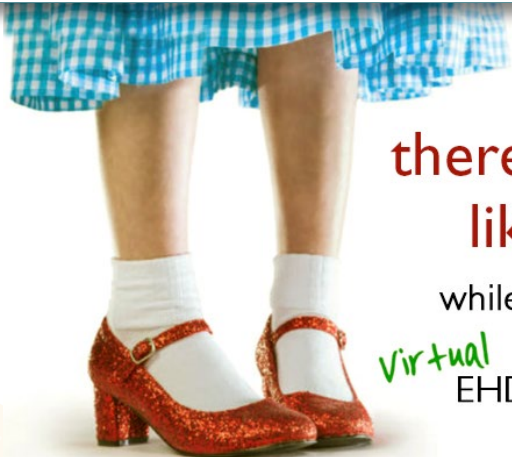




Quarterly Newsletter SPRING 2021

North Dakota Early Hearing Detection and Intervention



there's no place
like home

while also attending
the 2021
virtual EHDI Conference

I found the 2021 EHDI Conference to be full of useful information. While I missed the in-person discussions, I was still able to come away with many ideas and possible strategies that would benefit ND EHDI. For example, Iowa EHDI's presentation highlighting how they used their data to identify at-risk populations left me with some great take-aways for our ND EHDI program. Multiple topical sessions made me mindful of projects ND EHDI is working on or has yet to complete and how impactful partnered networking can be with time investment. My ultimate take-away has remained the same over the years...it takes a team of vested hearing health stakeholders (birthing hospitals, multiple healthcare disciplines, family support, and the EHDI program) working together to promote and assure complete, timely hearing health care.

– Sue Routledge

ND EHDI Follow-up/Data Coordinator

North Dakota Center for Persons with Disabilities



There were so many great insights and take-aways from the **20th Annual Early Hearing Detection & Intervention Meeting**, we can't cover them all, but here are a few!

It was great to be able to attend the 2021 EHDI conference. As a former parent advisor of NCHAM, it was great to see the advancements that have been made.

Great to see and hear from some familiar faces and continue to learn new material. Was also great to hear the importance of family support, family engagement, and parent/professional partnerships. For many years that has been advocated for. Nice to see that while work remains, how far the compass has moved forward.

– Donene Feist

Director, Family Voices
of North Dakota



Continued on next page...



It was a bit different attending virtually this year, but learning and professional development doesn't stop!

Thanks for all each of you do, day-in and day-out, to help children who are deaf or hard of hearing and their families achieve their potential.

Mark your calendar to join us for the 21st Annual Conference, March 13-15, 2022 in Cincinnati, Ohio!
Learn more at <https://ehdimeeting.org/>.

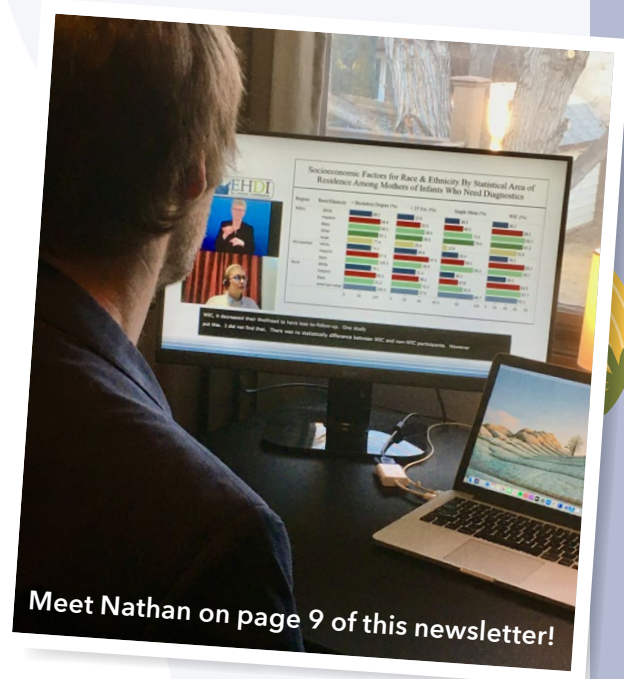
– Christine Brigden, LBSW
ND EHDl Follow-up,
North Dakota Center for
Persons with Disabilities



The EHDl conference was a great opportunity for me as the Part C Coordinator to continue to grow my knowledge around individuals who are deaf and hard of hearing. I participated in numerous sessions that made me think deeper about how EHDl and Part C can continue to improve our partnership to serve families of young children who are deaf and hard of hearing.

NORTH Dakota | Human Services
Be Legendary.™

– Jackie Adusumilli
Part C Coordinator



Meet Nathan on page 9 of this newsletter!

As always, I appreciate the EHDl conference for providing a space for professionals and families to come together to learn and grow – to improve for the sake of children with hearing differences. This year, I felt the most moved while attending sessions regarding social and emotional functioning and infant mental health. I appreciate that we are widening our lens to address the whole child and whole family unit.

– Jerrica Maxson, AuD, CCC-A
Clinical Audiologist,
Trinity Health



I appreciated the opportunity to learn about ways that EHDl systems are being leveraged for research, such as how Iowa analyzed data to identify factors that affect delayed diagnosis. I also felt encouraged to hear how states are exploring the integration of mental health data into EHDl to further support the holistic development of children.

– Dr. Nathan Anderson
North Dakota Early Hearing Detection and
Intervention (ND EHDl) Evaluator

Continued on next page...

The EHDI online conference was full and vibrant and the online platform held many advantages! This is my second EHDI Conference, and my brain was just as tired at the end of each day of the virtual platform as it was when I had previously attended in person. I am still watching presentations as they are available through May. A few of the takeaways or resources I would want to share with parents of and professionals who work with kiddos who are deaf and hard of hearing are:

- Fostering Joy (a Hands & Voices project focused on the joys of parenting a d/hoh kiddo) is now available for professionals too! There is a Facebook group dedicated to professionals: <https://www.facebook.com/groups/dhhfosteringjoyprof/?ref=share>.
- The H&V Family Leadership in Language & Learning Center, also known as the FL3 Center,

can provide a wealth of information as well as training sessions on a variety of topics for professionals, parents, and leaders! Visit <http://handsandvoices.org/fl3/>.

- The most moving for me personally was the introduction to the new Best Practice Guide for Parents with Children with UHL (Unilateral Hearing Loss), which is available at: https://www.phonak.com/content/dam/phonakpro/gc_hq/en/products_solutions/pediatrics/documents/PH_Guide_Parents_best_practice_for_children_with_UHL_EN_V1.00.pdf. There is also a professional version, and a resource like this can really help create communication and clarify options for families and the professionals who are on their teams!

— Jessica Harkins, parent

Baby Talk: The Importance of Early Hearing Screening

Cooing is more than baby talk. Language learning begins from a baby's earliest days, and it's a key part of nurturing. That's why knowing about a child's hearing difference as soon as possible is so important. In fact, children with permanent hearing loss have been found to develop better language skills the earlier they started interventions. The American Academy of Pediatrics recommends that babies be screened by one month of age, diagnosed by three months of age, and receive early intervention services by six months, according to their Early Hearing Detection and Intervention guidelines.

It's also a priority at CHI St. Alexius Health. "Despite a challenging year, we have continued to serve our littlest patients by providing hearing detection tests and intervention and education as necessary," said Anabel Ulat, RN, a nurse in the CHI St. Alexius Health Primary Care Clinic. CHI St. Alexius Health continues to help and support the North Dakota Early Hearing Detection and Intervention Program (EHDI) and offer these services to our community. In fact, every CHI St. Alexius Health provider has met our goal of 100% referral to Audiology if babies need further care. "We are committed to being a parent's partner in health when it comes to the health of their child," said Ulat.

Submitted by Anabel Ulat, RN
CHI St. Alexius Health
Williston, ND
CHIStAlexiusHealth.org



"When I let go of what I am, I become what I might be." – Lao Tzu

Meet our Staff

Ashley Martin has been a Parent-Infant Program and School Age Outreach Specialist for seven years. Previously she was the English teacher at the North Dakota School for the Deaf for four years. She is a teacher of the deaf with a Masters of Education from Minot State University. She also has an associate degree in American Sign Language Interpreting and is a certified sign language instructor in North Dakota.



Ashley Martin

As part of the Parent-Infant Program and School Age Department's service, Ashley teaches the classes offered to families to meet their individual needs. Community classes are also offered in the fall and winter. Ashley is currently working on her undergraduate degree in Speech-Language Pathologist from University of Utah.

Sign Language Classes and support are offered as one of the many services in the Parent-Infant Program for Families with Children who are Deaf or Hard of Hearing. This is offered to families wishing to learn sign language to communicate with their child.



For more information about this program or other services provided, contact Carol Lybeck at (701) 665-4400 or Carol.Lybeck@k12.nd.us

Signs of Spring



BIRD

Close index finger on thumb twice, hand at chin.



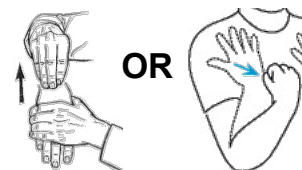
BUG

Thumb on nose, wiggle the index and middle fingers.



FLOWER

Fingertips on thumb at side of nose on dominant side then move to other side.



OR

OUTSIDE

Dominant open hand pulls out from C-hand and closes to O-hand OR this movement from the dominant shoulder.

Sign language clip art from "Signing for Kids" by Mickey Flodin

Extended Learning Calls

Spring is almost here! We hope this finds you all doing well and adjusting to a new normal. In March and April, Family Voices of North Dakota will be hosting several Extended Learning Calls with the Deaf/Blind Project.

We shared the last newsletter a bit about our Extended Learning Calls. These calls occur on weeknights at 8 pm to assure families can attend. These calls are for families and providers to learn about new programs and expand their skills. The calls will be recorded and posted on our website at www.fvnd.org. If any provider would like to be a guest speaker to get information out to a larger group, let us know.

We announce these workshops via our Family Voices of North Dakota listserv, and our e-newsletter which is distributed weekly on Mondays. If you are a family member or provider and would like to receive our e-newsletter and listserv, you can be added to this list by emailing fvnd@drtel.net or you can call our office at 888-522-9654.

The NDCPD Deaf-Blind Project will be the guest speakers for the Extended Learning Calls below:

- **Literacy and Numeracy - March 30**
<https://events.r20.constantcontact.com/register/eventReg?oeidk=a07ehm7xanw6112a497&oseq=&c=&ch=>
- **Family Engagement for Inclusive Education for Children who are Deaf-Blind - April 21**
<https://events.r20.constantcontact.com/register/eventReg?oeidk=a07ehm7ycjpf140282e&oseq=&c=&ch=>



Another area that I would like to draw your attention to for those of you involved in **Early Intervention**: the North Dakota Department of Human Services is soliciting comments regarding the Federal Fiscal Year 2021 Part C Application. Part C of the Individuals with Disabilities Education Act addresses services for children birth through two years of age with developmental disabilities or delays and their families. The Part C Grant Application for FFY 2021 has been posted for public comment. The application and public notice can be found at:

- **Public Notice:** <http://www.nd.gov/dhs/info/publicnotice/index.html>
- **Part C Application:** <https://www.nd.gov/dhs/services/disabilities/earlyintervention/index.html>

If you'd like a paper copy of the document, you can request it by calling 1-800-755-8529.

Public comments are being taken until April 26, 2021.

Comments will be accepted via mail, email, or phone.

- **Mail:** Jacqueline Adusumilli, Part C Coordinator,
1237 W Divide Ave, Suite 1A, Bismarck ND 58501.
- **Email:** jadusumilli@nd.gov
- **Phone:** 800-755-8529 or 711 (TTY) or TTY 800-366-6888

This is a great time to provide public comment on what is working and what isn't working from your view!

The pandemic has been hard on many. The Division of Behavioral Health has many mental health resources to assist providers and families needing some assistance. Please go to www.behavioralhealth.nd.gov to see resources and share with others.

If you are a family member and need additional support, do call us at Family Voices of North Dakota. We are here to help. Family support is a vital component as families adjust to a new diagnosis and changing times. Supporting families and connecting them to organizations assures they get resources and services in ways that are respectful, relevant, and honor their unique choices and perspectives so that they can make informed decisions to achieve the best possible outcomes for their children and youth. It takes us all.

- Submitted by Donene Feist
Director, Family Voices of North Dakota
www.fvnd.org

What a Year 2020 was for ND H&V!

This past year was not what we expected, but it provided an opportunity for our team to get creative in how we support families. We are so proud of the Guide By Your Side team that has worked so hard to reach and support families. We'd like to give some highlights from 2020!

Widespread use of face coverings provided our team an opportunity to advocate for our community with hearing differences. We had a fundraiser to increase the use of facemasks with clear panels, created a resource for educational considerations, and enhanced the information provided by the ND Department of Health to include masks with clear panels. We were able to hold a few in-person events in the spring before we moved to virtual options like our "Ask the ..." series on Facebook and a virtual family craft via ZOOM. Email ndhvsecretary@gmail.com for more information, to place an order for a Clear to be Clear Mask, or with questions about our fundraising efforts.

We did some outreach with the Magic City Lions and honored another incredible educator, Carla Kays, with our chapter's 6th annual High 5 Award. She stood out from the other incredible nominations for her dedication, flexibility, and respect for the family's wishes for their child. She taught this student advocacy to another level that will ensure she succeeds and others have better awareness! Thanks to all that made nominations and thanks to all our incredible educators out there!

We were honored to be represented with local articles in three of the four issues of The Communicator, the Hands & Voices Headquarter's quarterly newspaper.



Here's most of your ND H&V board ZOOMing and working to improve this journey for ND families. Never hesitate to contact us for support, questions, or suggestions!



February 2020 - Stephanie Nishek-Marrufo, a North Dakota author of, "All the Ways I Hear You," based the main character on her son, Silas. Her idea was to show children with different devices like cochlear implants, hearing aids, and bone-anchored hearing systems. To learn more visit <https://www.stephaniemarrufobooks.com/shop>.

Our fundraising efforts included a Clear to be Clear Mask fundraiser, as well as two nation-wide Hands & Voices fundraisers which included a 4th of July themed T-shirt sale and a virtual 5k!

While it wasn't the year we expected, it was still an incredible year. All of this would not be possible without the assistance of funding provided through the Health, Resources, and Services Administration (HRSA) grant received by ND Early Hearing Detection and Intervention (EHDI) and our annual memberships. Thanks to all who have supported us! Please follow us on Facebook and Instagram to keep up to date on our activities.

- Leslie Halseth, President,
North Dakota Hands & Voices
www.ndhandsandvoices.org



North Dakota Early Hearing Detection and Intervention

Please share with families and caregivers for them to learn more about the next steps in the early hearing detection and intervention processes.



All babies should be screened by 1 month of age, preferably before leaving the hospital

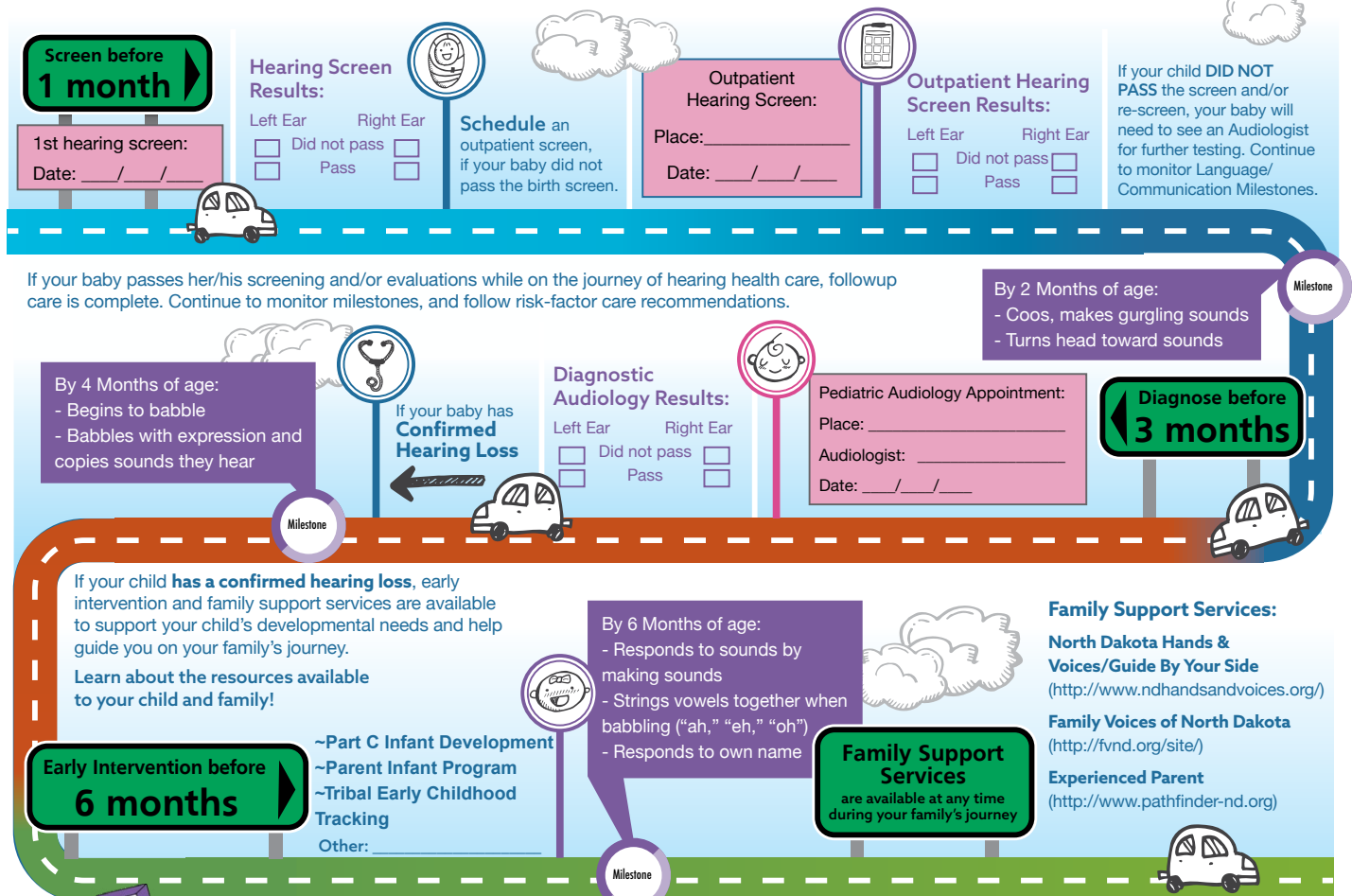
If after 2 screenings the baby does not pass, a medical and hearing evaluation is needed before 3 months

Once hearing loss is detected, services and intervention should be started by 6 months of age

This 1-3-6 guideline was developed to give the baby the best possible time frame to be screened, diagnosed, treatment, and services begun. The earlier a baby is determined to have a hearing loss and begins receiving services, the more likely that speech, language, and social skills will reach their full potential.

North Dakota Infant Hearing Road Map

The ND Early Hearing Detection & Intervention Road Map is a quick reference on the “next steps” for complete hearing health care.



For further guidance with your child's hearing health journey or for a list of pediatric audiologists, contact ND EHDI at 1.800.235.1737 or www.ndcpd.org/ehdi.



Commitment to Improving Hearing Screening Hospitals, Newborns and Families: ND Early Hearing Detection and Intervention Program and OZ Systems



Early identification of infants with hearing loss began in the 1960s in Colorado with Dr. Marion Downs but it was the Joint Committee on Infant Hearing Position Statement in 1994 that started states moving toward universal newborn hearing screening with the goals to 1) screen every baby prior to discharge 2) identify hearing loss by 3 months of age and 3) provide intervention by 6 months of age. Rhode Island and Hawaii were early adopters of newborn hearing screening.

Think back to the 1990s. Many nurseries used large handwritten logbooks to keep track of their patients – mother and baby. Electronic Health Records (EHR) were not commonplace. It would not be until 2004 that the Office of the National Coordinator of Health Information Technology was created and five years later that the Health Information Technology for Economic and Clinical Health Act (HITECH) was passed.

However, over the same time period, the technology for screening newborns' hearing has not changed much except that it is smaller and more portable. In the 90s, results were commonly documented by handwriting them into the patient record or affixing a printed label from the hearing screening device into the patient record. Who remembers that old thermal paper where the print disappeared over time? Moving the screening results electronically from the device to the patient record would have seemed like sci-fi.

And yet this is what was needed. OZ Systems was on the forefront of obtaining screening results with minimal human interaction. In 1996, OZ Systems collaborated with hearing screening manufacturers Biologic Systems, Grason Stadler, and Otodynamics to create a file "OZ7" that was exported from the screening device to the OZ Systems *Screening Information Management System*. But it did not eliminate all manual entry. Demographics were still from the logbook or the crib card and manually entered in the state screening information management systems. So, we had two places where data accuracy could be corrupted. First, the initial input into the screening device, and second the results reporting back into the medical record.

Electronic Patient Data Entry to North Dakota EHDI Program

Again, in the past demographic information was obtained from unpredictable and inaccurate sources. The information was written time and time again. The potential for errors was substantial. This was one reason for the introduction of electronic health records (EHRs). Information needed to be shared with other programs including the North Dakota EHDI program.

The Newborn Admission Notification Information (NANI) was developed with the standards community from *Integrating the Healthcare Enterprise* including OZ Systems. Simple demographic data using special baby specific, HL7 ADT (admission, discharge, transfer) messages are electronically sent from each hospital to the state's EHDI information system. North Dakota EHDI has licensed OZ to provide NANI implementation, maintenance, and support for all birthing hospitals in North Dakota at no cost. Ten of the 12 currently have OZ NANI implemented.

OZ NANI eliminates the need for entering demographics on each newborn, saving staff time, and freeing them for other duties. It reduces the risk of error that comes with manual entry and ensures that the newborn EHDI record is complete which is imperative for babies who need further care coordination and hearing services.

Electronic Results Entry to North Dakota EHDI Program

Reading and transferring screening results from one piece of equipment into another system is not ideal. Sooner or later a pass will be recorded as a refer which will mean additional screening for a baby. Or worse a refer will be recorded as a pass resulting in delaying diagnosis; an error which has significant ramifications for that baby and family. Hearing screening results need to be reported to the state EHDI program with minimal chance of error.

As stated, earlier OZ Systems was on the forefront of moving results electronically with the development of the "OZ7" file. But this required several steps to import these files. Recently, *OZ Telepathy™ EHDI* was built to automate this process and automatically consume the files from the hearing screening devices. North Dakota EHDI program provides *OZ Telepathy™ EHDI* to all birthing hospitals at no additional charge. In North Dakota, 8 out of 12

Continued on next page...

birthing hospitals currently have OZ Telepathy™ EHDI implemented. If your facility is in the market for new equipment, be sure your hearing screening device sales representative shows you how that new device creates the OZ Telepathy™ EHDI file. It means fewer errors and provides the staff more time to care for the baby.

OZ Telepathy™ EHDI eliminates the need to manually enter screening results. This saves staff time and frees them up to perform other duties. It reduces the risk of error that comes with manual data entry and ensures that the newborn EHDI record is accurate which is imperative for babies to receive the appropriate care coordination and hearing services.

Electronic Results Entry to the Electronic Health Record

The same errors apply to hand entering results into your hospital's electronic health record (EHR) too. You need to electronically transfer screening results into the EHR.

OZ Connect for EHDI was developed to implement HL7 V 2.6.1 messages for newborn hearing screening. OZ creates an ORU (Observation Result) message containing demographic and result information that can be matched to the baby's record in the EHR. This message is sent at the same time the results are consumed into the North Dakota EHDI information management system. There is no longer a need to manually enter the results and the results reported to the state match the results reported in the hospital EHR. OZ Connect for EHDI is a separate solution purchased by the hospital.

Integration of Systems

Technology and standards make it possible to integrate and move data electronically. The purpose of newborn hearing screening is to identify babies who need more hearing health care. Accurate and timely results are essential to prompt identification and intervention. With all newborn screenings, there is a critical window of opportunity to change a baby's future. OZ Systems creates solutions to ensure caregivers know what care is needed within that window of opportunity. The North Dakota EHDI program has been on the forefront of understanding the benefits for the hospital, the EHDI program, and most importantly the newborn and their family.

- Wendy Welsh, M.S., CCC-A
Director of Sales and Marketing
OZ Systems

www.ozsystems.com

Welcome Nathan Anderson!

Hi, my name is Nathan Anderson.

I am the new North Dakota Early Hearing Detection and Intervention (ND EHDI), Evaluator. I am responsible for guiding the development and implementation of an evaluation plan to strategically answer questions that matter. More specifically, I collaborate with other EHDI staff and stakeholders to formulate relevant evaluation questions, identify or develop data collection instruments and protocol, create solutions for efficiently storing and retrieving data, analyze data in ways that respond to the evaluation questions, disseminate results to applicable audiences, and consider potential decisions or actions that may be informed by the findings. I hold a Ph.D. in Education with an emphasis on Institutional Analysis from North Dakota State University, co-teach a Capstone course based on the A+ Inquiry framework as an alternate option to completing a thesis in Minot State University's (MSU) Master of Education program, and have contributed to research and evaluation efforts for a variety of state-level initiatives, including ND's Statewide Longitudinal Data System, ND's Multi-Tier System of Supports, and the ND Full Service Community Schools Consortium.

I am married with three kids. My wife, Jeni, works in the Criminal Justice Department at MSU. My daughter, Kaydra, is a graduate student at MSU and teaches 6th grade at South Middle School in Grand Forks. My son, Cole, is an undergraduate student at MSU and works at the Before & After School program at Perkett Elementary School in Minot. My daughter, Claire, is a freshman at Central Campus High School. We love hosting family gatherings and spending time at the lake.

I am grateful to have a role on the ND EHDI team, eager to continue refining and implementing the evaluation plan, and excited to explore opportunities for further advancing this important work.

- Dr. Nathan Anderson

North Dakota Early Hearing Detection
and Intervention (ND EHDI) Evaluator





EHDI Resources, Upcoming Events, and Webinars

CMV Public Health & Policy Conference • Aug. 22-24, 2021

Ottawa, Ontario, Canada

<https://www.facebook.com/CMVPublicHealthandPolicyConference>

[CMVPublicHealthandPolicyConference](https://www.facebook.com/CMVPublicHealthandPolicyConference)



North Dakota Power Up Health Conference is going virtual on Sept. 10, 2021. Learn more:

<http://ndcpd.org/powerup.html>



Save the date! 21st Annual Early Hearing Detection and Intervention Conference

Mar. 13-15, 2022 • Cincinnati, Ohio

www.ehdimeeting.org



NCHAM WEBINARS:

Understanding Hearing Loss and Audiogram Results

Apr. 30, 2021 • Presented by: Kali Markle, AUD

<http://www.heartolearn.org/communities/learning-together.html#may-2021>



Studying Language Where it Counts the Most, in the Home!

May 21, 2021 • Presented by: Nicole Jacobson, MS, CCC-SLP, LSLC Cert. AVEEd and Sarah Law, M.Ed.

<http://www.heartolearn.org/communities/learning-together.html#may-2021>

Visit Hands and Voices Family Leadership in language and learning cooperative (FL3) to explore past webinars and trainings on topics about Family Leadership, Deaf and Hard of Hearing Adult Involvement, Family-to-Family Support, and Language, Literacy and Social Development.

<https://www.handsandvoices.org/fl3/resources/trainings-webinars.html>



Hospitals: do you need more brochures? Contact Vicki by emailing vickie.brabandt@MinotStateU.edu



We hope you will find the newsletter provides a broad picture of hearing healthcare in North Dakota. Through collaborative efforts, streamlined processes and consistent communication, ND can assure a strong system of hearing health care for every child birthed and/or residing in North Dakota.

We look forward to being a resource for quality improvement and working with you!

Sincerely,
The ND EHDI Staff

To subscribe ND-EHDI Newsletter, email christine.bridgen@MinotStateU.edu.



North Dakota Early Hearing Detection and Intervention Program

North Dakota Center for Persons with Disabilities

Minot State University, Memorial Hall
500 University Ave. West, Minot, ND 58707
(800) 233-1737

Chime in! Check out the ND EHDI website at www.ndcpd.org/ehdi

for information or to meet the staff. If you have questions, find broken links or typos, or have suggestions, please let us know.



ARE YOU FOLLOWING US?

www.facebook.com/NDEHDI

[@NDEHDI_NDCPD](https://twitter.com/NDEHDI_NDCPD)